

Tutorial 4 - Creating a web site

In this tutorial we will cover:

Defining the site
Inserting text and images
Inserting Tables
Setting Table properties
Setting Page Properties
Using cascading style sheets (CSS)
Creating additional pages
Creating links
Creating email inks
Creating hyperlinks

In the previous session we built a text only web page of your CV. In this session we will start to build a web site on the subject of my trip to Scotland. The completed web site can be viewed online at <http://www.mikejaques.co.uk/teaching/scotland/>

Define the site – Site structure and set up

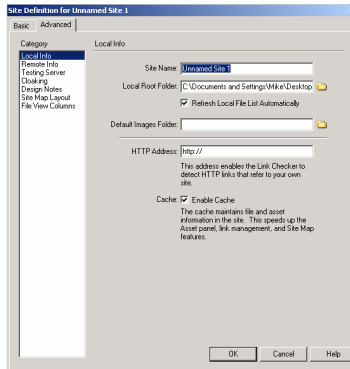
Define the site

Dreamweaver relies on you to create a 'site' for each and **every project** you work on within Dreamweaver. This ensures all files and links are properly defined. If you don't define the site ahead of time Dreamweaver will give you warnings about nearly everything. It's fast, it's easy and it's integral to Dreamweaver. Learn to love it.

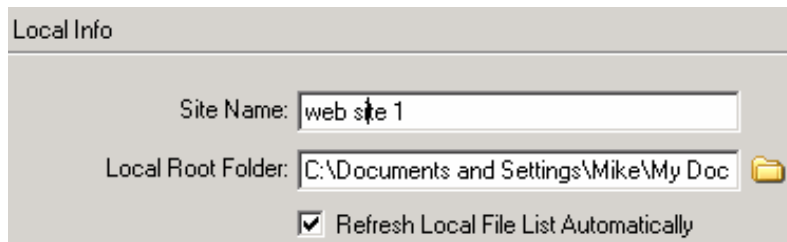
- **Step 1:** Open Dreamweaver.
- **Step 2:** Create a new page. Go to **File > New**. Choose **Basic Page > HTML** Click **Create**.
- **Step 3:** Go to **Site > Manage Sites**. From the popup choose **New... > Site**.
- **Step 4:** The Site Definition pop-up will appear. Ensure that you have the **Advanced Tab** selected. (We will use the advanced option as it is much quicker than the basic option).



The advanced window should look like this:



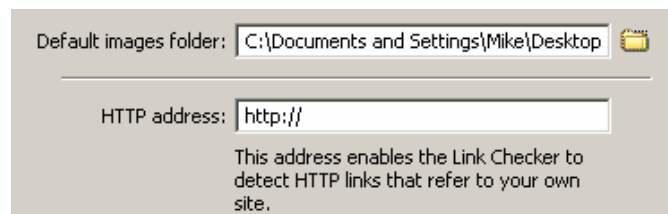
- **Step 5:** In the **Site Name** box you need to enter a site name. You can use any name here. In my example I have called it “web site 1”. The name is merely for organizational purposes and won't display in the browser. Type in “**web site 1**”.



- **Step 6:** Next we must define the Local Root Folder. The local root folder is where the site files for this particular site will be kept. Click the **Browse** button (folder icon) to either navigate to an existing folder or to create a new folder.
- **Step 7:** Navigate your way to your student drive and then create a new folder by clicking on the “**Create new folder**” icon.



- **Step 8:** Name the folder as “**web site 1**” then click **Open** and then **Select** (PC) or **Choose** (Mac).
- **Step 9:** Next we need to click on the folder icon next to “**Default Images Folder**”.



- **Step 10:** Navigate to your “web site 1” folder and open it. Within this folder create a new folder named images. With the images folder highlighted click **Open** and then **Select** (PC) or **Choose** (Mac).

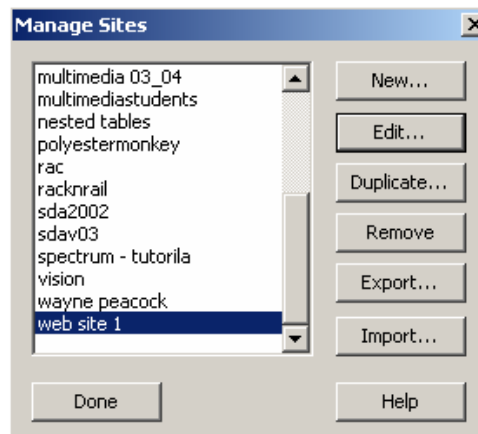
This has told Dreamweaver that all of the images that we shall use in our web site should be stored within this images folder.

- **Step 11:** Select "**Refresh Local File List Automatically**". You should always check this as it ensures your any changes you make to your site are reflected immediately.
- **Step 12:** Finally make sure that you also tick the "**Enable Cache**" option.



This will greatly increase Dreamweaver's speed in checking links. You may get a box telling you about how Dreamweaver needs to create the site cache. You don't need and most likely won't want to continue seeing this box so you can select for it not to display again.

- **Step 13:** Click **OK**.
- **Step 14:** Click **Done**.



- **Step 15:** Now we need to save the page. Go to **File > Save as**. As this is the first page for your site be sure to save it as **index.htm**. This is the default page that web servers look for. Also be sure that you save the page within your root folder "**web site 1**".

Note: You will need to define the site for EVERY site you work with from within Dreamweaver.

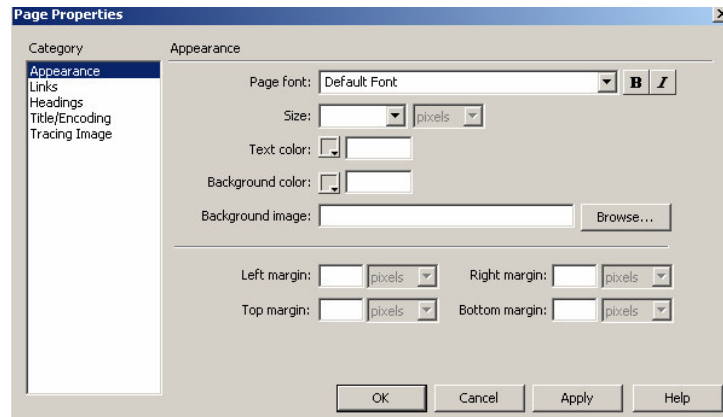
You are now ready to start building the web site.

Making the web pages

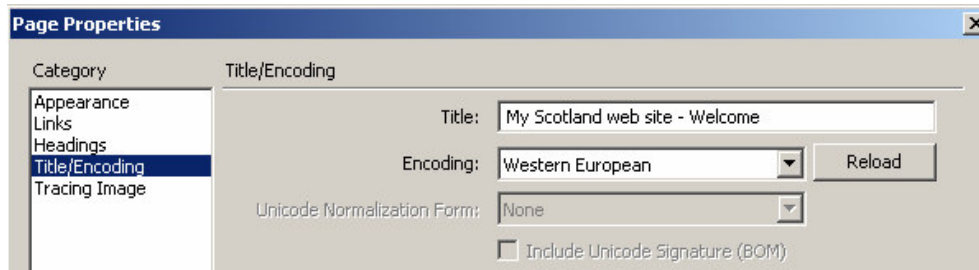
Page Properties

Once we have defined and structured the site the next thing we want to do is name our page and set the background colour.

- **Step 16:** To do this go to **Modify > Page Properties**.



- **Step 17:** Let's start by setting the default font for our whole page. In the **"Page font"** box choose **Arial**, size **12 pixels**, Text color **#000066** (a dark blue). Unless we tell Dreamweaver otherwise all of our text will take on this style.
- **Step 18:** Set the Background color to **#CEEFFF** (a light blue). Click **Apply**.
- **Step 19:** Next we need to add a page title. Still within Page Properties select **Title/Encoding**.



- **Step 20:** In the Title box enter **"My Scotland web site – Welcome"**.



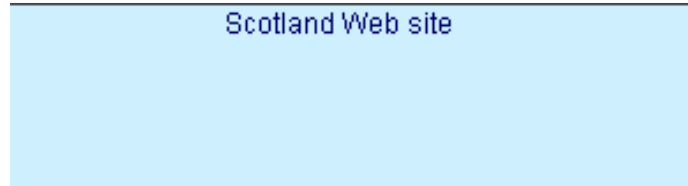
Your web site name is the name that appears in the users browser title bar. This is an important element as it helps search engines to organise your web site as well as providing information for the user.

- **Step 21:** Click **OK** when you are done. We will revisit the some of the other options later in the session.

Adding text to your page

Next it's time to add some text to your page.

- **Step 22:** Click on your page and type the words '**Scotland Website**'



- **Step 23:** Click at the end of the line of text to place the cursor there, then press the Enter key on your keyboard. This will move the cursor down 2 lines. Type in "**Welcome to my first website built in Dreamweaver MX 2004. Here are some pretty pictures of Scotland**".

Notice how when we add text it is automatically being formatted. This is why we set the Page Font within the Page Properties.



Adding images to your page

You guessed it - now it's time to add some images to your page!

- **Step 24:** Click at the end of your last line of text then press Enter to move down. Select **Insert > Image** from the top menu, from my image folder (I will tell you its location) select '**scot1.jpg**' then click **OK**. The image will appear on your page.



- **Step 25:** With the image still selected take a look at the Properties Inspector. Notice how the Src (source) is **images/scot1.jpg**. Because we have defined the site and set the Images folder the image has automatically been copied from my images folder to yours. This is one of the many reasons why it is vitally important that you define the site.

